

# SILVERSCREEN

High Performance Fabric



TEXTSTYLE



## SILVERSCREEN BY VEROSOL

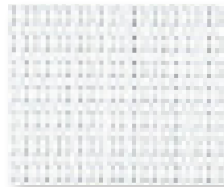
SilverScreen is a metalized interior solar shade fabric that carries the highest solar reflectance in the market. It is available in both 2% and 4% openness. The secret of its superior and outstanding performance lies in its construction.

SilverScreen is backed with an ultra-fine layer of aluminum, dramatically improving solar energy control, while demonstrating excellent view through and glare control.

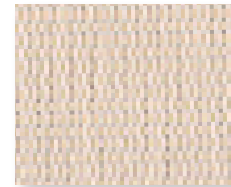
## FEATURES

- Highest unrivalled solar reflectance in the market of 85%
- Color independent fabric – SilverScreen has virtually the same solar and optical performance across the entire color range
- Made of durable PVC coated fiberglass
- Flame Retardant
- Available in two openness factors - 2% and 4%
- Available in 10 neutral colors
- Versatile – can be used in roller shades and panel track applications
- Improves energy savings and comfort

## COLORS



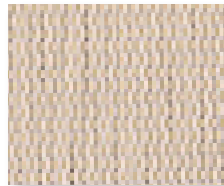
WHITE | 2%, 4%



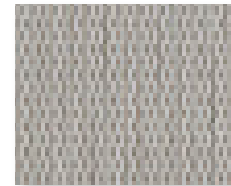
BEIGE | 2%, 4%



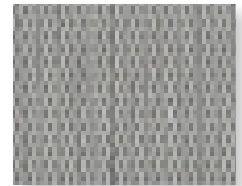
LIGHT GRAY | 2%, 4%



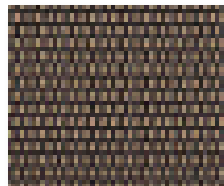
DARK BEIGE | 4%



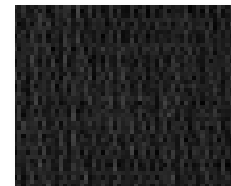
MISTY GRAY | 2%, 4%



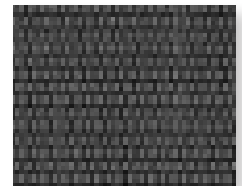
STEEL GRAY | 2%, 4%



BRONZE | 2%, 4%



CHOCOLATE BROWN | 2%, 4%



DARK GRAY | 2%, 4%



BLACK | 2%, 4%

Bringing Fabrics to Life

USA | AUSTRALIA | EUROPE [textstyle.com](http://textstyle.com)

 **ROLLEASE  
ACMEDA**

©2022 Textstyle

# SILVERSCREEN

High Performance Fabric



TEXTSTYLE

## SPECIFICATIONS

	2%	4%
Composition	36% Fiberglass, 64% PVC with Aluminum backing	
Weight	11.8oz/yd <sup>2</sup> (400g/m <sup>2</sup> )	
Thickness	0.020in (.50mm)	
Openness Factor	Average 2%	Average 4%
Light fastness	Grade 8 (Blue Wool Scale)	
Average length	36 yd/roll (33m)	
Width	110" (2.9m)	94" (2.4m)
Railroadable	No	
Cleaning	Lightly vacuum to remove surface dust.	
Environmental Standards	GREENGUARD Gold, OEKO-TEX Standard 100, Health Product Declaration, ISO 14001	
Fungal/Bacterial Resistance	ASTM E2180, G21, G22	
Fire Classifications	NFPA 701, NFP 92503 specification M1, BS 5867 Part 2 Type B, CA Title 19	

## THERMAL AND OPTICAL FACTORS

	Glazing Perf.	White		Beige		Light Gray		Dark Beige	Misty Gray	Steel Gray		Bronze		Choc. Brown	Dark Gray		Black		
		2%	4%	2%	4%	2%	4%	4%	4%	2%	4%	2%	4%	4%	2%	4%	2%	4%	
Solar Reflection Outside		82%	77%	82%	76%	85%	77%	76%	75%	82%	76%	81%	75%	76%	81%	76%	85%	76%	
Light Transmission		3%	6%	3%	5%	3%	5%	5%	5%	3%	5%	3%	5%	4%	3%	4%	3%	4%	
Openness Factor		2%	4%	2%	4%	2%	4%	4%	4%	2%	4%	2%	4%	4%	2%	4%	2%	4%	
IR Emissivity (metal side)		0.05	0.16	0.05	0.16	0.05	0.16	0.16	0.16	0.07	0.16	0.10	0.16	0.16	0.10	0.16	0.10	0.16	
Color Rendering Index		100	100	100	99	100	99	99	100	100	100	100	99	100	100	99	99	99	
<b>High Performance Glazing</b> (reference glazing D EN14501)																			
Light Transmission	60%	2%	4%	2%	4%	2%	4%	4%	3%	2%	4%	2%	4%	3%	2%	3%	2%	3%	
Solar Heat Gain Coefficient (SHGC)	32%	12%	14%	12%	14%	12%	14%	14%	14%	12%	14%	13%	14%	14%	13%	14%	13%	14%	
U-value (W/m <sup>2</sup> K)	1.1	0.7	0.7	0.7	0.7	0.7	0.7	0.7	0.7	0.7	0.7	0.7	0.7	0.7	0.7	0.7	0.7	0.7	
<b>Insulating Glazing</b> (reference glazing C EN14501)																			
Light Transmission	79%	3%	5%	3%	5%	3%	5%	5%	4%	3%	5%	3%	5%	4%	3%	4%	3%	4%	
Solar Heat Gain Coefficient (SHGC)	59%	22%	25%	22%	26%	22%	25%	26%	26%	23%	26%	24%	26%	26%	24%	26%	24%	25%	
U-value (W/m <sup>2</sup> K)	1.2	0.7	0.7	0.7	0.7	0.7	0.7	0.7	0.7	0.7	0.7	0.7	0.7	0.7	0.7	0.7	0.7	0.7	



FR



LEAD FREE



FORMALDEHYDE FREE



FRAGRANCE FREE



ENERGY SAVING

Bringing Fabrics to Life

USA | AUSTRALIA | EUROPE [textstyle.com](http://textstyle.com)



©2022 Textstyle